

**Pretrial Services Statistics
Fiscal Year 2010
July 1, 2009-June 30, 2010**

Evaluated and NOT Released to Pretrial Services

**Hon. William C. Birdsall
District Court Judge, Division I**

**Hon. Thomas J. Hynes
District Court Judge, Division VI**

**Hon. Sandra A. Price
District Court Judge, Division III**

**Hon. Karen L. Townsend
District Court Judge, Division VIII**

**Hon. John A. Dean, Jr
District Court Judge, Division IV**

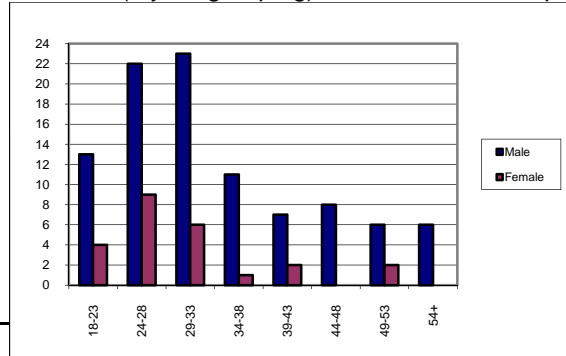
**Compiled by Roy Stoddard
Pretrial Services Supervisor**

1. Referrals Taken for Evaluation and Not Released to Pretrial Supervision

A. Demographics

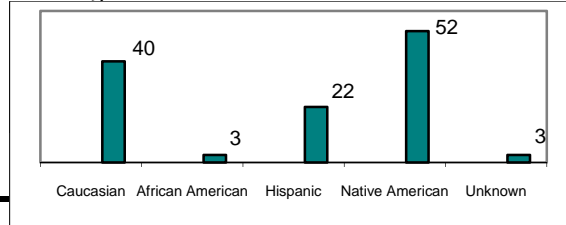
1. Average Age Range of Defendant (5 year grouping) Not Released to Supervision

Age	Male	Female	Total
18-23	13	4	17
24-28	22	9	31
29-33	23	6	29
34-38	11	1	12
39-43	7	2	9
44-48	8	0	8
49-53	6	2	8
54+	6	0	6
	96	24	120



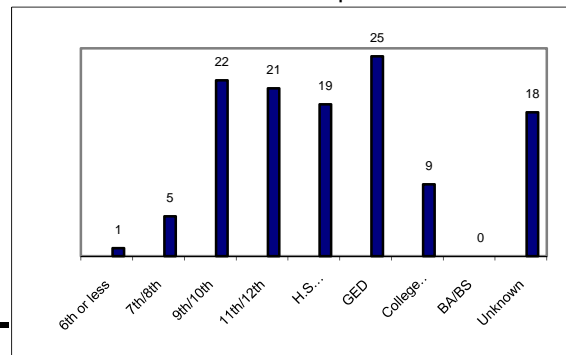
2. Number and Racial/Ethnic Background of Defendants Not Released to Supervision

Caucasian	40
African American	3
Hispanic	22
Native American	52
Unknown	3
	120



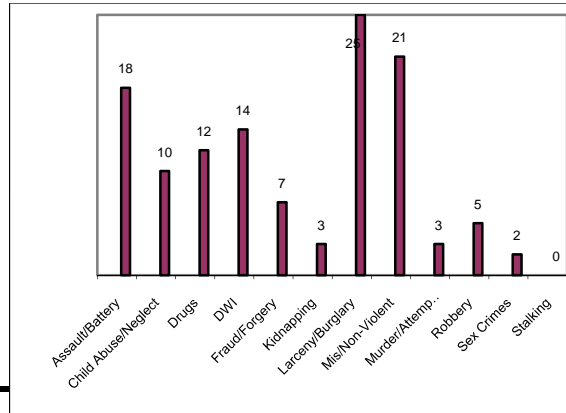
3. Educational Status of Defendants Not Released to Supervision

6th or less	1
7th/8th	5
9th/10th	22
11th/12th	21
H.S. Diploma	19
GED	25
College 1yr/2yr	9
BA/BS	0
Unknown	18
	120



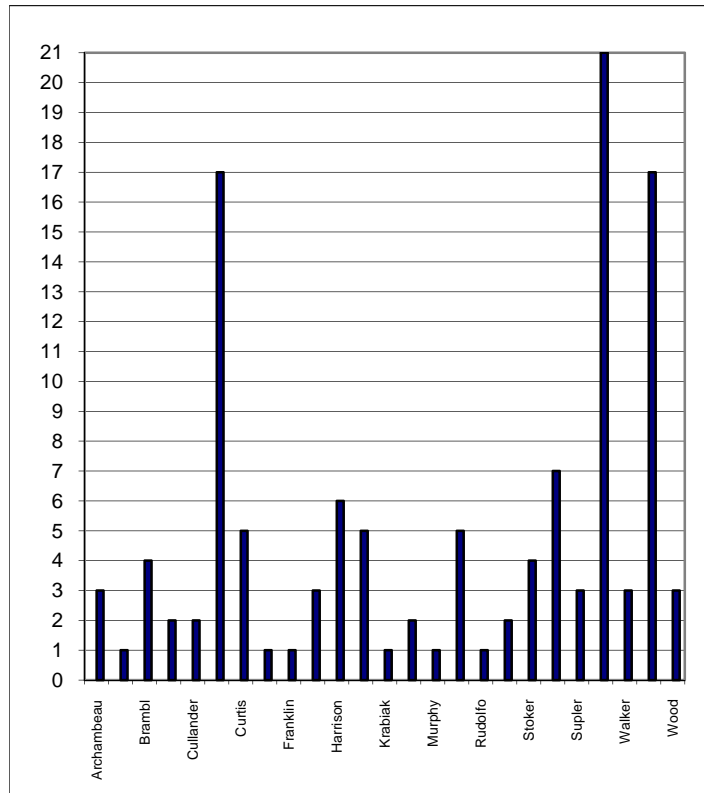
4. Category of Charges Upon Referral for Screening

Assault/Battery	18
Child Abuse/Neglect	10
Drugs	12
DWI	14
Fraud/Forgery	7
Kidnapping	3
Larceny/Burglary	25
Mis/Non-Violent	21
Murder/Attemp Murder	3
Robbery	5
Sex Crimes	2
Stalking	0
Total	120

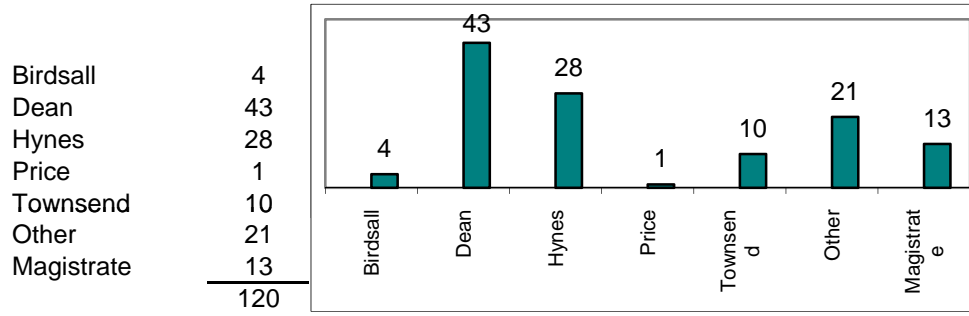


5. Number of Defendants Per Attorney Not Released to Supervision

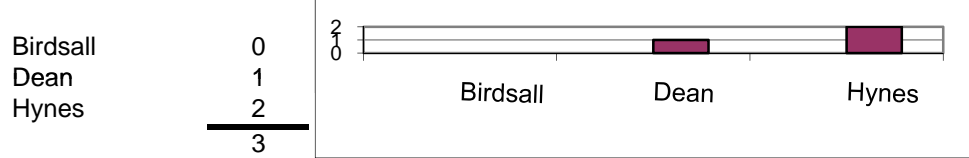
Archanbeau	3
Bradley	1
Brambl	4
Clifton	2
Cullander	2
Curnutt	17
Curtis	5
Dalley	1
Franklin	1
Frost	3
Harrison	6
Klug	5
Krabiak	1
Morrow	2
Murphy	1
Ripol	5
Rudolfo	1
Stackhouse	2
Stoker	4
Stone	7
Supler	3
unknown	21
Walker	3
Wheeler	17
Wood	3
Total	120



6. Number of Cases Per Judge Not Released to Supervision



7. Number of Defendants on Probation/Parole and Referred to Pretrial for COR



**Eleventh Judicial District
Pretrial Services Statistical Report**

**Recommended
and/or
Put on Pretrial Supervision**

**Hon. William C. Birdsall
District Court Judge, Division I**

**Hon. Sandra A. Price
District Court Judge, Division III**

**Hon. John A. Dean, Jr
District Court Judge, Division IV**

**Hon. Thomas J. Hynes
District Court Judge, Division VI**

**Hon. Karen L. Townsend
District Court Judge, Division VIII**

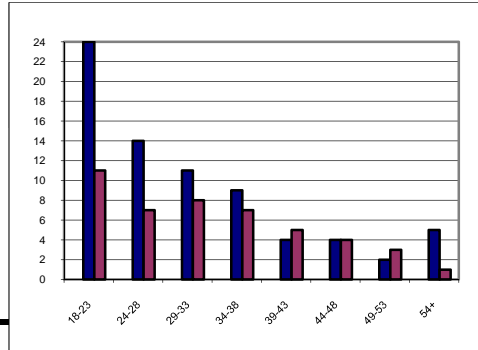
**Compiled by Roy Stoddard
Pretrial Services Supervisor**

2. Referrals Taken for Evaluation and Recommended and/or Put on Supervision

A. Demographics

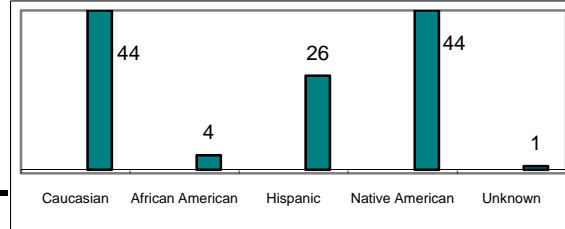
1. Average Age of Defendants (5 year grouping)

Age	Male	Female	Total
18-23	24	11	35
24-28	14	7	21
29-33	11	8	19
34-38	9	7	16
39-43	4	5	9
44-48	4	4	8
49-53	2	3	5
54+	5	1	6
	73	46	119



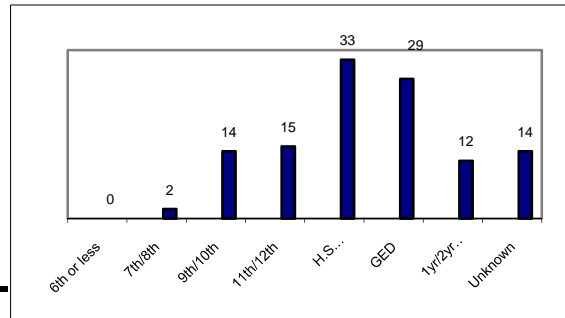
2. Number and Racial/Ethnic Background of Defendants Referred for Supervision

Caucasian	44
African American	4
Hispanic	26
Native American	44
Unknown	1
	119



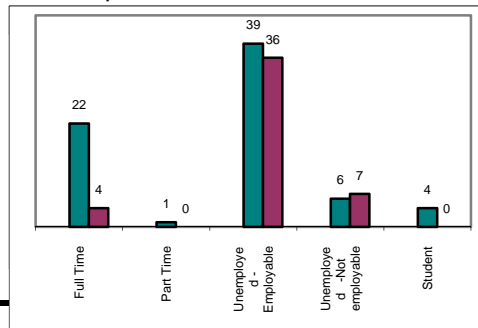
3. Educational Status of Defendants Recommended for Supervision

6th or less	0
7th/8th	2
9th/10th	14
11th/12th	15
H.S. Diploma	33
GED	29
1yr/2yr College	12
Unknown	14
	119

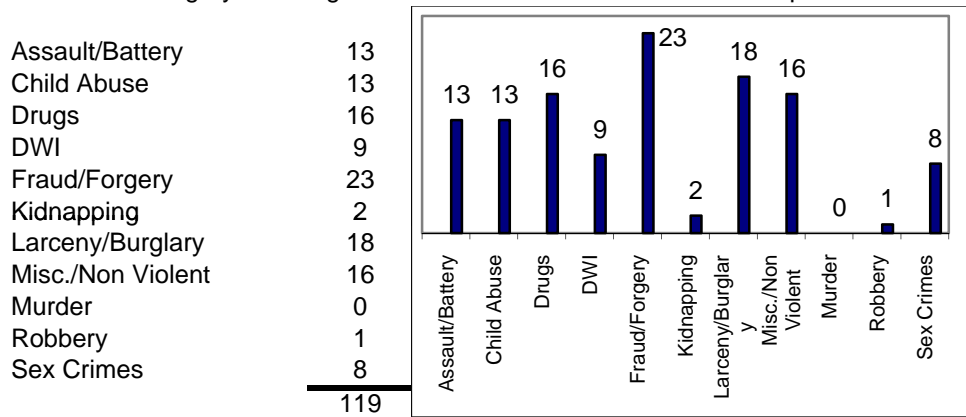


4. Employment Status of Defendants for Supervision

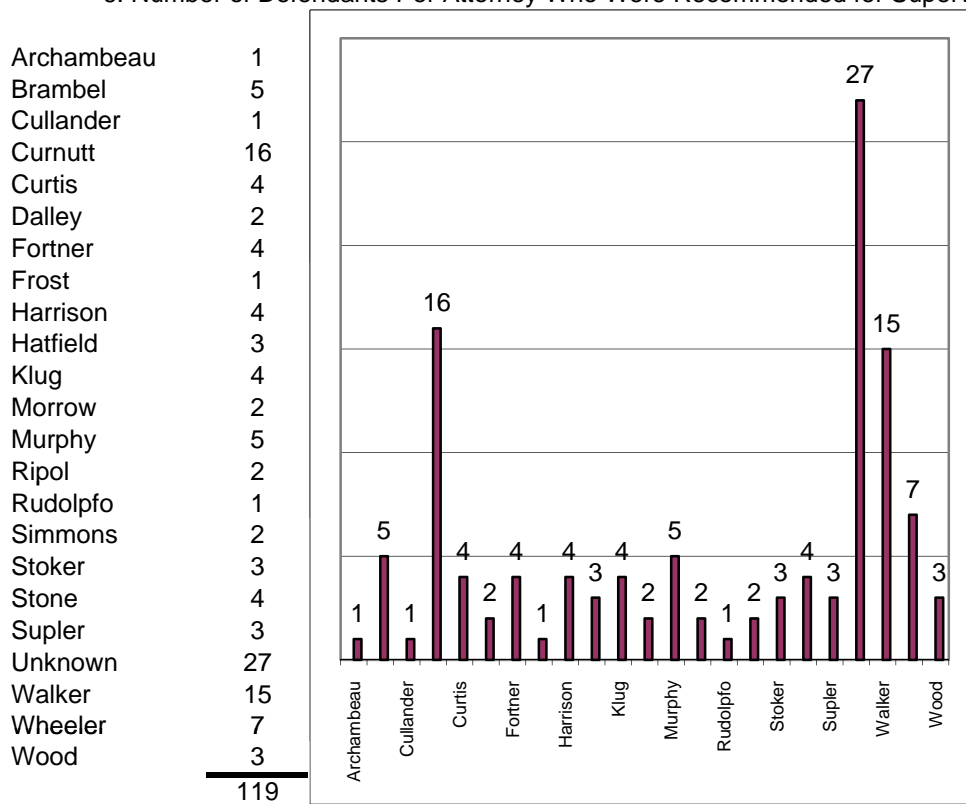
	Male	Female	Total
Full Time	22	4	26
Part Time	1	0	1
Unemployed - Employable	39	36	75
Unemployed - Not employable	6	7	13
Student	4	0	4
	72	47	119



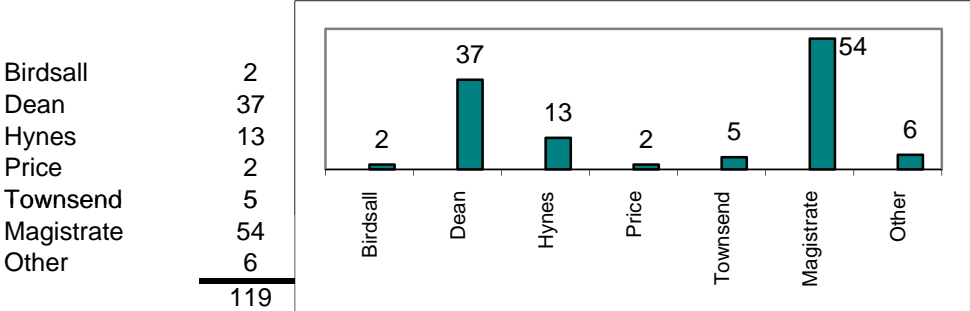
5. Category of Charges of Defendants Recommended for Supervision



6. Number of Defendants Per Attorney Who Were Recommended for Supervision



7. Number of Cases Per Judge Recommended for Supervision



Eleventh Judicial District
Pretrial Services Statistical Report

**Discharged
from
Pretrial Supervision**

**Hon. William C. Birdsall
District Court Judge, Division I**

**Hon. Sandra A. Price
District Court Judge, Division III**

**Hon. John A. Dean, Jr
District Court Judge, Division IV**

**Compiled by Roy Stoddard
Pretrial Services Supervisor**

**Hon. Thomas J. Hynes
District Court Judge, Division VI**

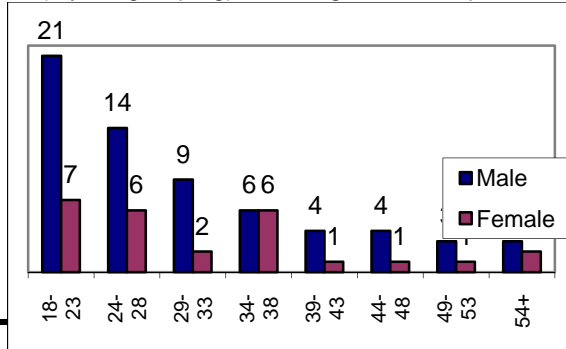
**Hon. Karen L. Townsend
District Court Judge, Division VIII**

3. Number of Clients Discharged from Supervision

A. Demographics

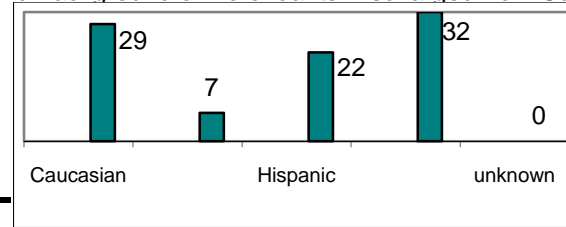
1. Average Age of Defendant (5 year grouping) Discharged from Supervision

Age	Male	Female	Total
18-23	21	7	28
24-28	14	6	20
29-33	9	2	11
34-38	6	6	12
39-43	4	1	5
44-48	4	1	5
49-53	3	1	4
54+	3	2	5
	64	26	90



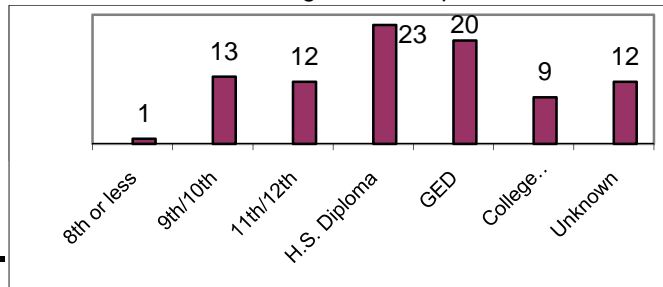
2. Number and Racial/Ethnic Background of Defendants Discharged from Supervision

Caucasian	29
African American	7
Hispanic	22
Native American	32
unknown	0
	90



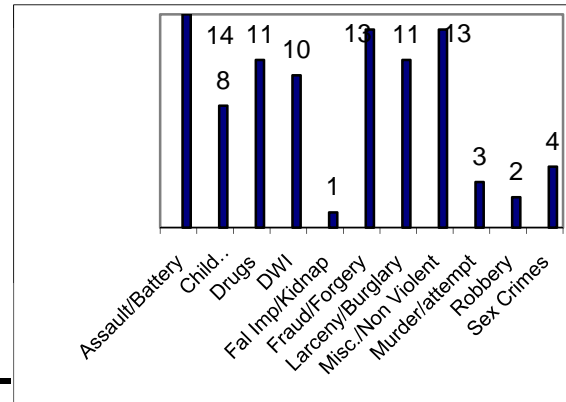
3. Educational Status of Defendants Discharged from Supervision

8th or less	1
9th/10th	13
11th/12th	12
H.S. Diploma	23
GED	20
College 1yr/2yr	9
Unknown	12
	90



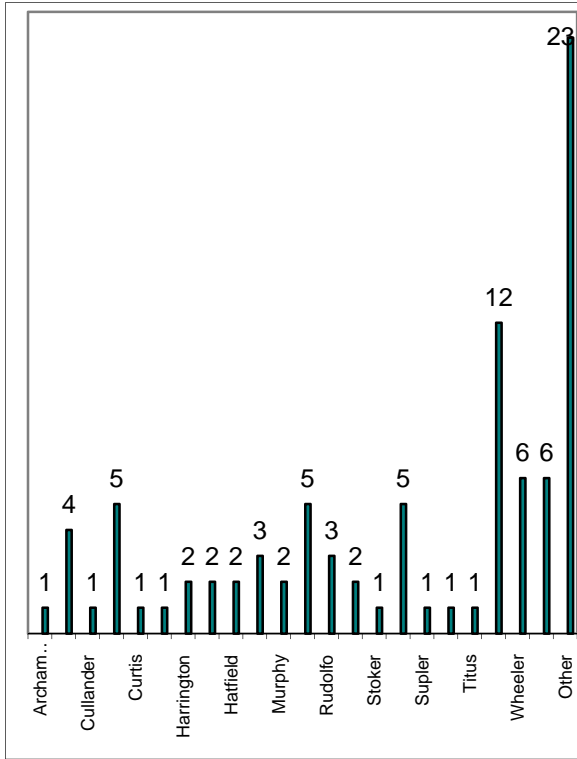
4. Category of Charges Upon Referral for Screening of Defendants Discharged from Supervision

Assault/Battery	14
Child Abuse/Neglect	8
Drugs	11
DWI	10
Fal Imp/Kidnap	1
Fraud/Forgery	13
Larceny/Burglary	11
Misc./Non Violent	13
Murder/attempt	3
Robbery	2
Sex Crimes	4
	90



5. Number of Cases Per Attorney Discharged from Supervision

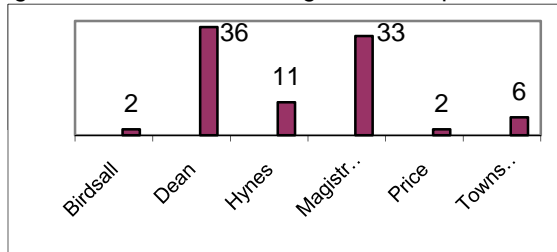
Archambeau	1
Brambl	4
Cullander	1
Curnutt	5
Curtis	1
Fornter	1
Harrington	2
Harrison	2
Hatfield	2
Klug	3
Murphy	2
Ripol	5
Rudolfo	3
Simmons	2
Stoker	1
Stone	5
Supler	1
Tedrow	1
Titus	1
Walker	12
Wheeler	6
Wood	6
Other	23



90

6. Number of Cases Per Judge of Defendants Discharged from Supervision

Birdsall	2
Dean	36
Hynes	11
Magistrate	33
Price	2
Townsend	6



90

7. Defendant Refused Interview

2

8. Defendant was Currently on Probation or Parole

6

9. Number of Defendants Unsuccessful While on Supervision

a. Arrested on New Charges

11

b. Bench Warrants Issued

23

c. Remanded to Custody for Violation of COR

6

d. Current/Active Bench Warrants

41